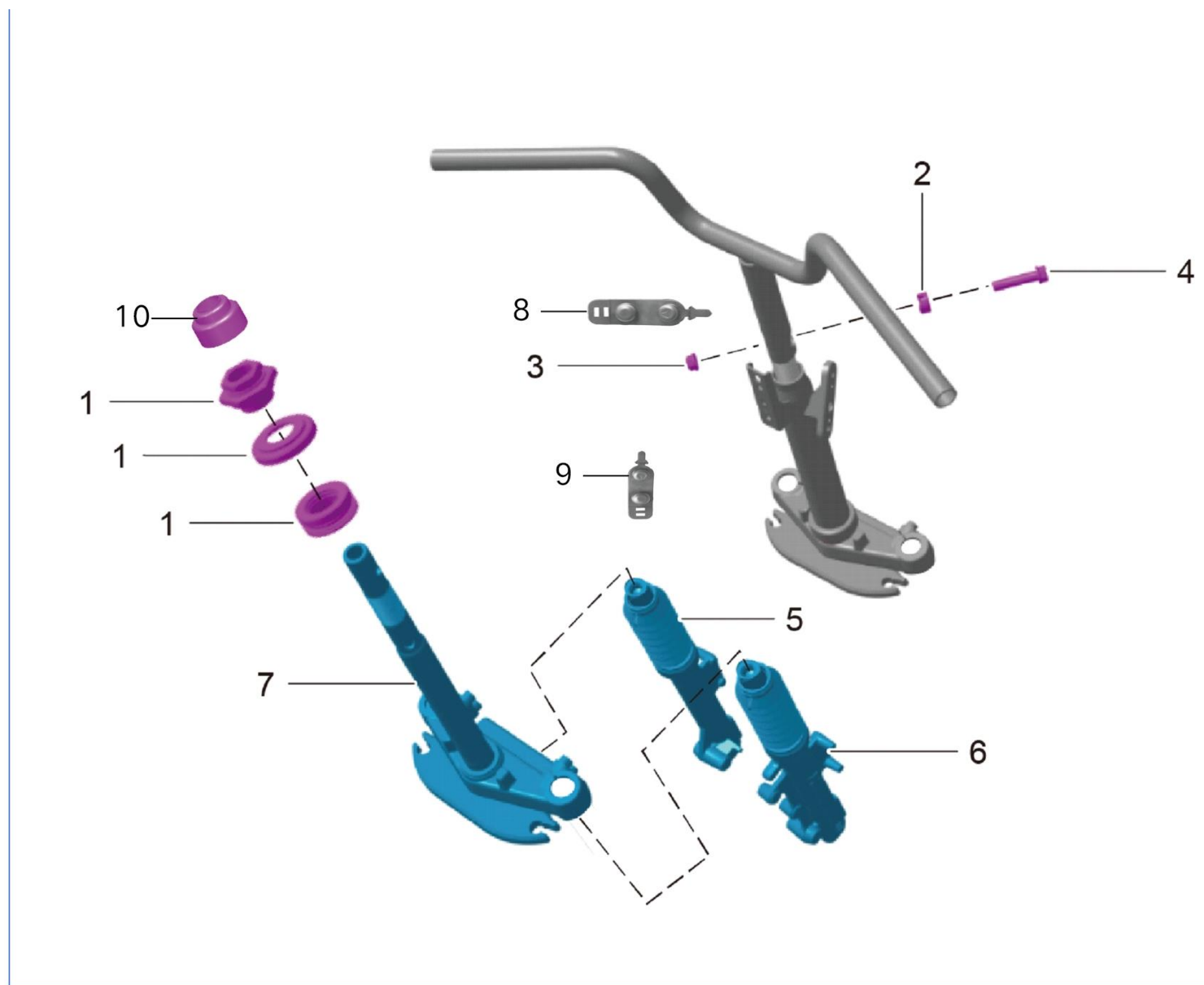
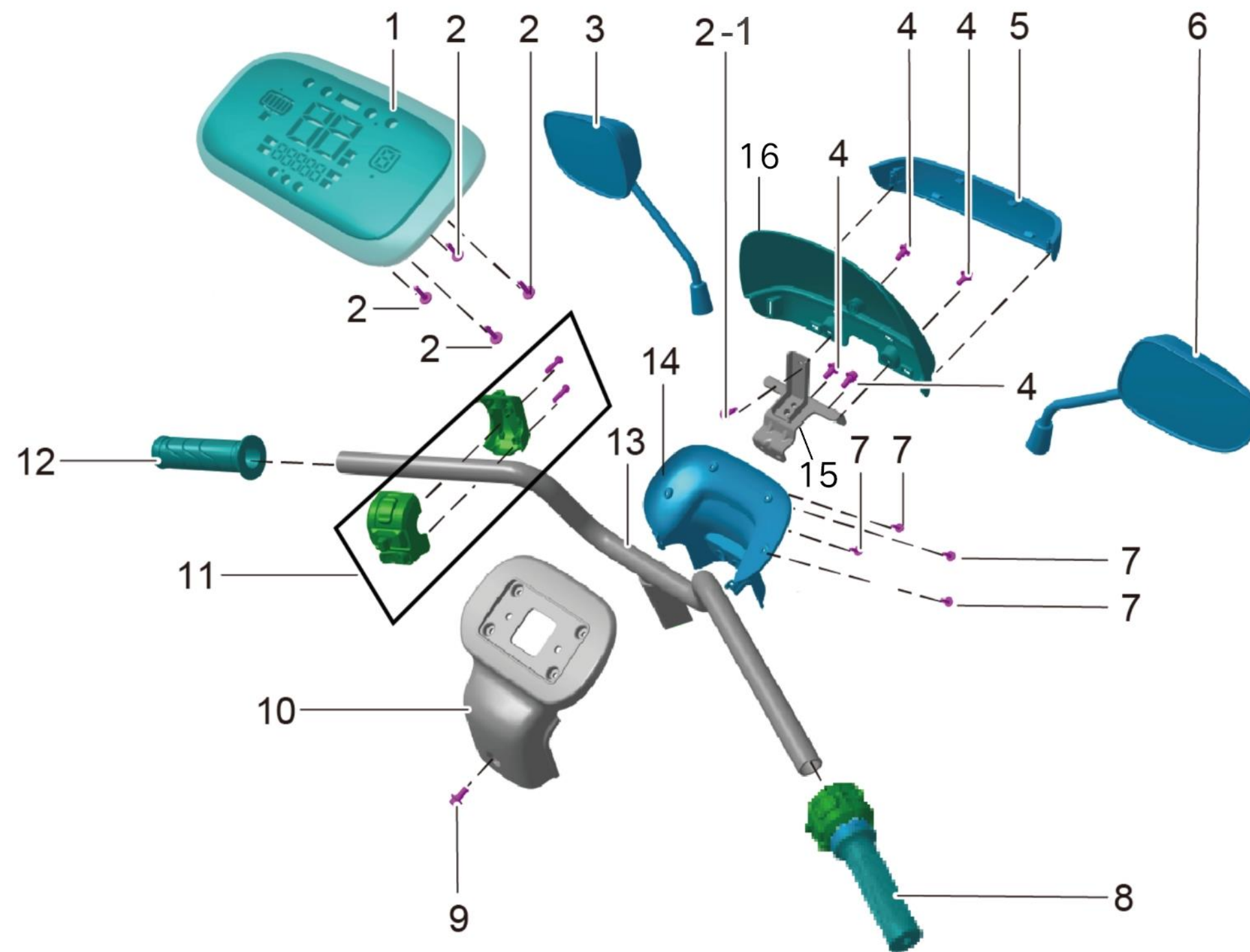


| POSITION NO. | CODE | CN DESCRIPTION | EN DESCRIPTION | QTY/ UNIT | REMARKS |
|--------------|-----------------|---|--|-----------|------------|
| F71-01-1 | 90201-0000065 | 前轮轴 | Front Wheel Axle | 1 | |
| F71-01-2 | 90551-0000055 | 轴套(左) | Front Wheel Axle Sleeve (Left) | 1 | |
| F71-01-3 | 42101-DE8S-0100 | 轮胎/90/80-12/6PR/CY189/Y/真空胎/E4/英文/载重加强型 | Tire/6PR/CY189/Higher Load Mass | 1 | |
| F71-01-4 | 44100-D296-0100 | 前轮毂 | Front Wheel Hub | 1 | |
| F71-01-5 | 90551-0000056 | 轴套(右) | Front Wheel Axle Sleeve (Right) | 1 | |
| F71-01-6 | 43305-N145-0100 | 碟刹盘(前) | Disc Brake Rotor (front) | 1 | |
| F71-01-6 | 43305-DE8S-0100 | 碟刹盘(前) /R/0cr13mn- | Disc Brake Rotor/R/0cr13mn-(front) | 1 | R/0cr13mn- |
| F71-01-7 | 92029-0000005 | 内六角花形盘头螺钉/M8×20-5 | Hexalobular Socket Pan Head Screw | 7 | |
| F71-01-8 | 94204-0000036 | 平垫圈 | Flat Washer | 1 | |
| F71-01-9 | 94201-0000023 | 标准型弹簧垫圈 | Single Coil Spring Lock Washers--Normal Type | 1 | |
| F71-01-10 | 42110-D0U1-0100 | 前气嘴 | Valve/Φ19-Φ15/Straight Head | 2 | |
| F71-01-11 | 10000-N0E8-0000 | 电机 | Motor | 1 | |
| F71-01-12 | 43305-D0E8-0000 | 碟刹盘(后) | Disc Brake Rotor (rear) | 1 | |
| F71-01-12 | 43305-DE8S-0200 | 碟刹盘(后) | Disc Brake RotorR/0cr13mn- (rear) | 1 | R/0cr13mn- |
| F71-01-13 | 42110-2401-0100 | 后气嘴 | Valve/PVR70/Buckle/Big | 2 | |

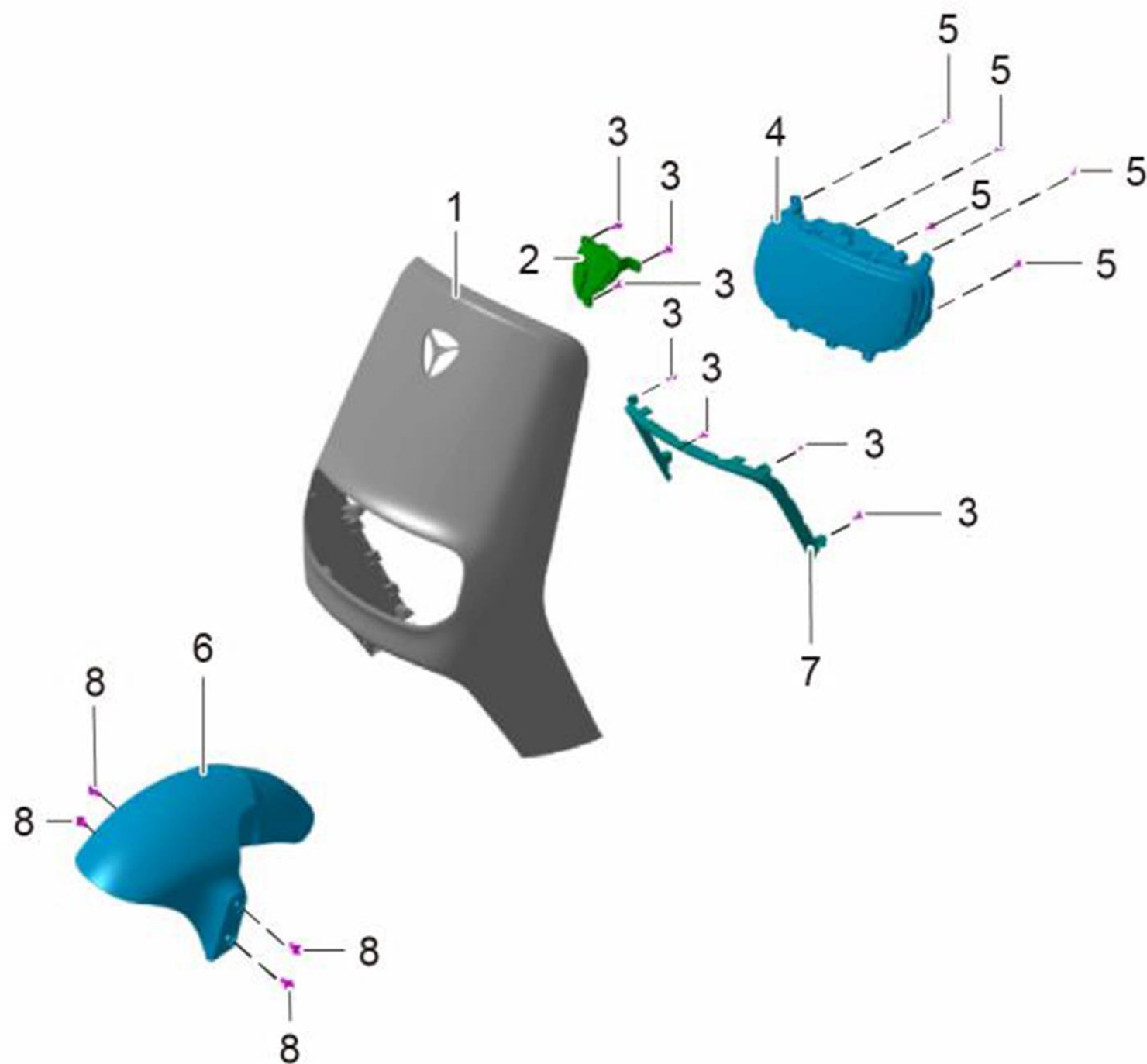
F71-02 转向 HANDLEBAR



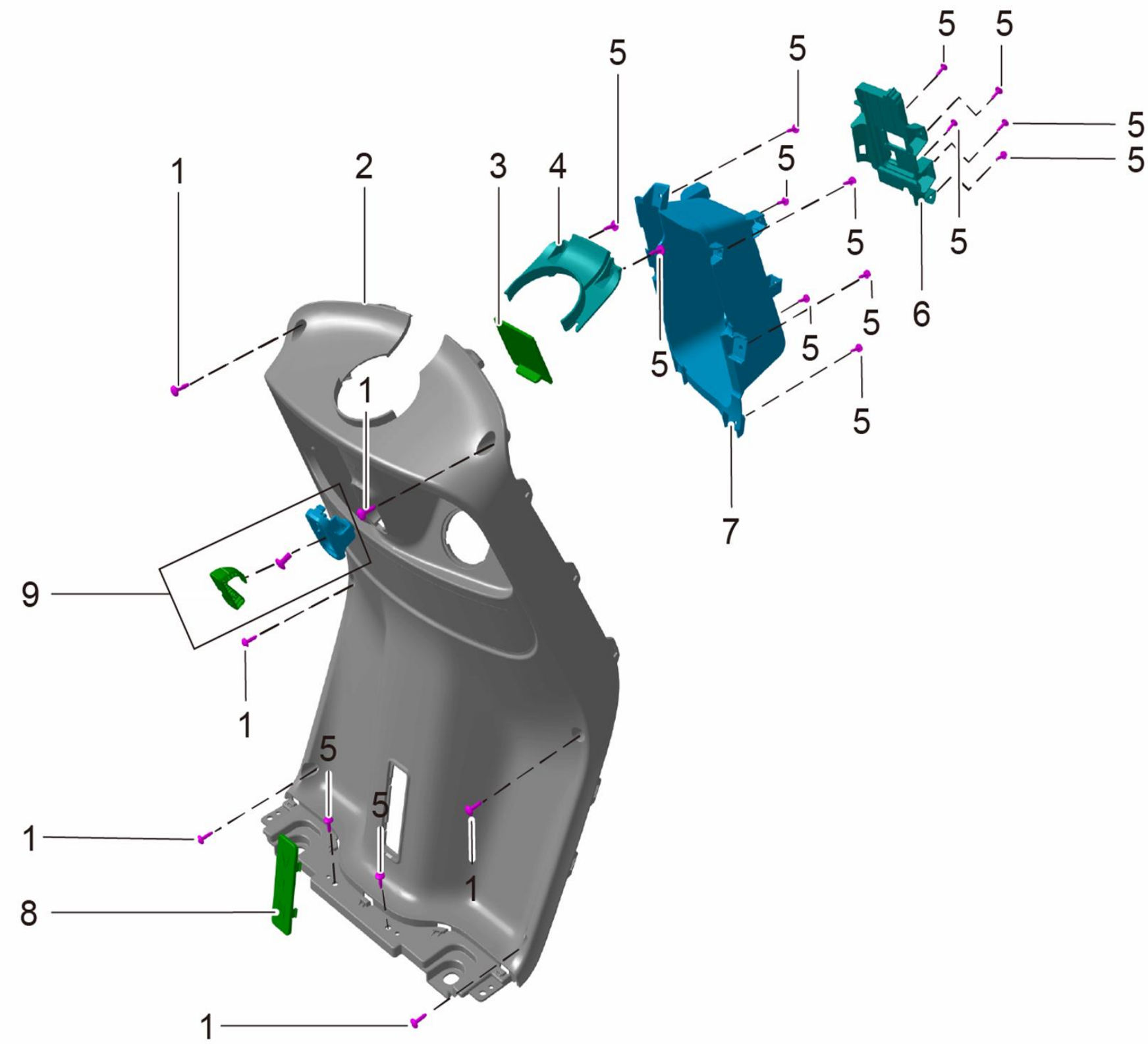
| POSITION NO. | CODE | CN DESCRIPTION | EN DESCRIPTION | QTY/ UNIT | REMARKS |
|--------------|-----------------|------------------------------|---|-----------|---|
| F71-02-1 | 51600-N0E9-0100 | 转向轴承 | Steering Bearings | 1 | |
| F71-02-2 | 53151-2DV2-0000 | 方向把锁紧块 | Handlebar Lock Part | 1 | |
| F71-02-3 | 94005-0000017 | 2型全金属六角法兰面锁紧螺母/M10×1.25 | Hexagon flange lock nut/M10×1.25 | 1 | |
| F71-02-4 | 92015-0000185 | 六角法兰面螺栓 加大系列 B级/M10×1.25×45 | Hexagon Flange Bolts/Heavy Series/M10×1.25×45 | 1 | |
| F71-02-5 | 51100-2145-0100 | 左前减震器 | Front Left Shock Absorber | 1 | |
| F71-02-5 | 51100-DE8S-0100 | 左前减震器 | Front Left Shock Absorber | 1 | CASS Test For 32h/Level 9 |
| F71-02-6 | 51200-2957-0100 | 右前减震器 | Front Right Shock Absorber | 1 | |
| F71-02-6 | 51200-DE8S-0100 | 右前减震器 | Front Right Shock Absorber | 1 | CASS Test For 32h/Level 9 |
| F71-02-7 | 51300-D0E8-0000 | 方向器 | Steering Column | 1 | Electro-coating |
| F71-02-7 | 51300-DE8S-0100 | 方向器 | Steering Column | 1 | Electro-coating and Powder Spraying/ With Clamps for Oil Tube |
| F71-02-8 | 51602-N0E9-0200 | 防尘罩/PVC/36×140/扎带型车把固定螺栓保护套- | Dust cover | 1 | |
| F71-02-9 | 83125-N0Q6-0000 | 把立装饰件/Q6/TPE/黑/螺栓护套- | Handlebar trim | 1 | |
| F71-02-10 | 51602-N0T1-0000 | 防尘罩/PVC/φ25×φ50×2/黑- | Dust cover | 1 | |



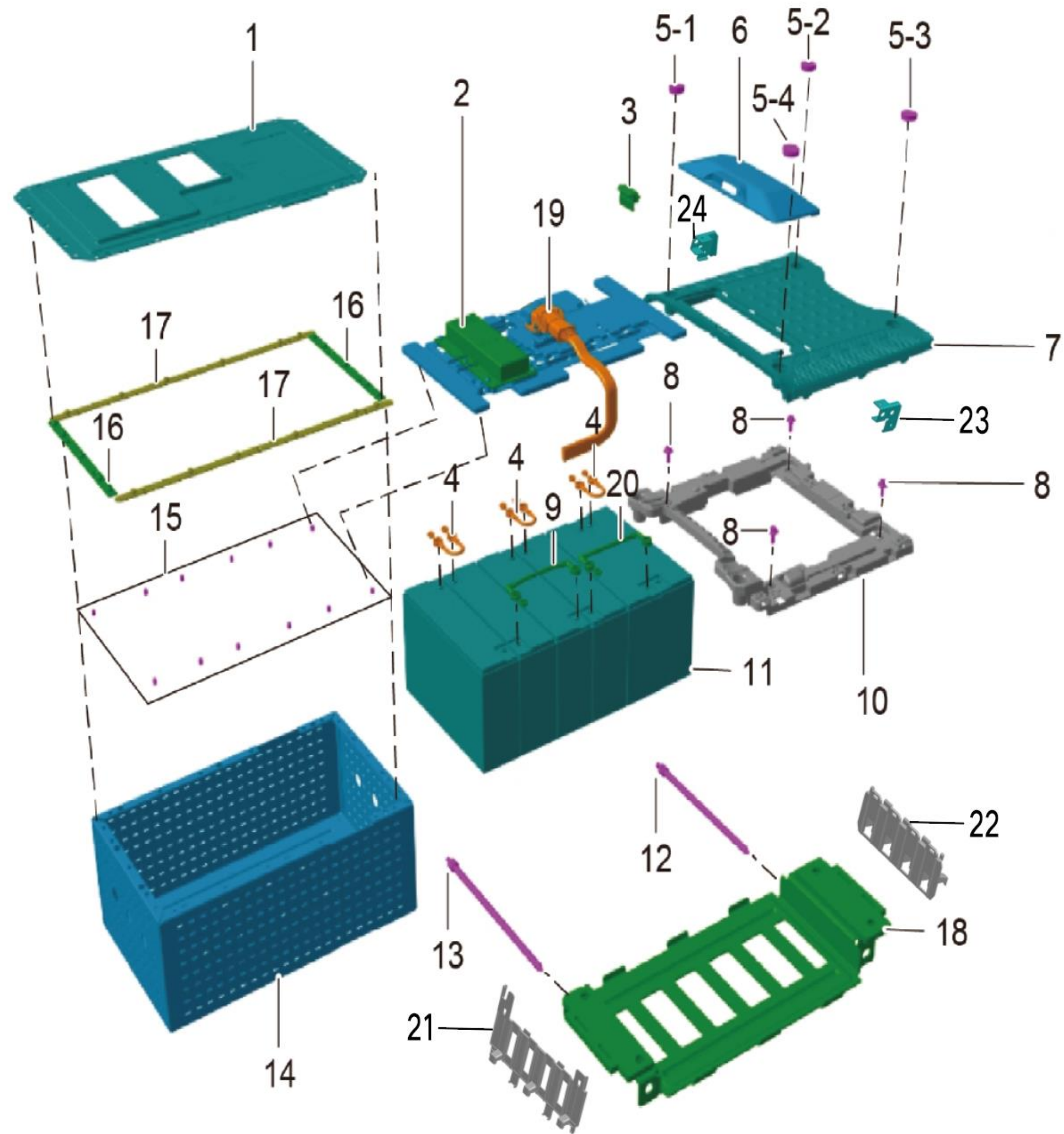
| POSITION NO. | CODE | CN DESCRIPTION | EN DESCRIPTION | QTY/ UNIT | REMARKS |
|--------------|--------------------|-----------------------------|--|-----------|---------|
| F71-03-1 | 37100-DE8S-0200 | 转向轴承 | Dashboard | 1 | |
| F71-03-2 | 92055-0000041 | 方向把锁紧块 | Cross Pan Tapping Screw/ST4.2×13 | 4 | |
| F71-03-2-1 | 92055-0000042 | 2型全金属六角法兰面锁紧螺母/M10×1.25 | Cross Pan Tapping Screw/ST4.8×13 | 1 | |
| F71-03-3 | 88110-DC1S-0000 | 六角法兰面螺栓 加大系列 B级/M10×1.25×45 | Left Review Mirror | 1 | |
| F71-03-4 | 92015-0000058 | 左前减震器 | Hexagon Flange Bolt Series B/M6×12 | 4 | |
| F71-03-5 | 83106-D0E8-0000601 | 左前减震器 | Fairing Trim-Moonlight Silver | 1 | |
| F71-03-6 | 88120-2C1S-0100 | 右前减震器 | Right Review Mirror | 1 | |
| F71-03-7 | 92055-0000030 | 右前减震器 | Cross Pan Tapping Screw-Grade C | 4 | |
| F71-03-8 | 35600-DE8S-0100 | 方向器 | Right Combination Switch | 1 | |
| F71-03-9 | 92053-0000002 | 方向器 | cross recessed tapping screw | 1 | |
| F71-03-10 | 64115-D0E8-0200602 | 方向把罩/E8/ABS/月光银 | Handlebar Cover/E8S/ABS/Moonlight Silver | 1 | |
| F71-03-11 | 35500-DE8S-0100 | 左组合开关 | Left Combination Switch | 1 | |
| F71-03-12 | 53231-2446-0100 | 把套 | Left Grip | 1 | |
| F71-03-13 | 53100-N0E8-0000 | 方向把 | Handlebar | 1 | |
| F71-03-14 | 64115-D0E8-0000600 | 方向把罩/E8-G/ABS/月光银/前 | Handlebar Cover/Moonlight Silver | 1 | |
| F71-03-15 | 50480-D0E8-0200 | 导流罩支架 | Deflector bracket | 1 | |
| F71-03-16 | 64101-D0E8-0000 | 导流罩/E8/PC/茶色 | Deflector | 1 | |



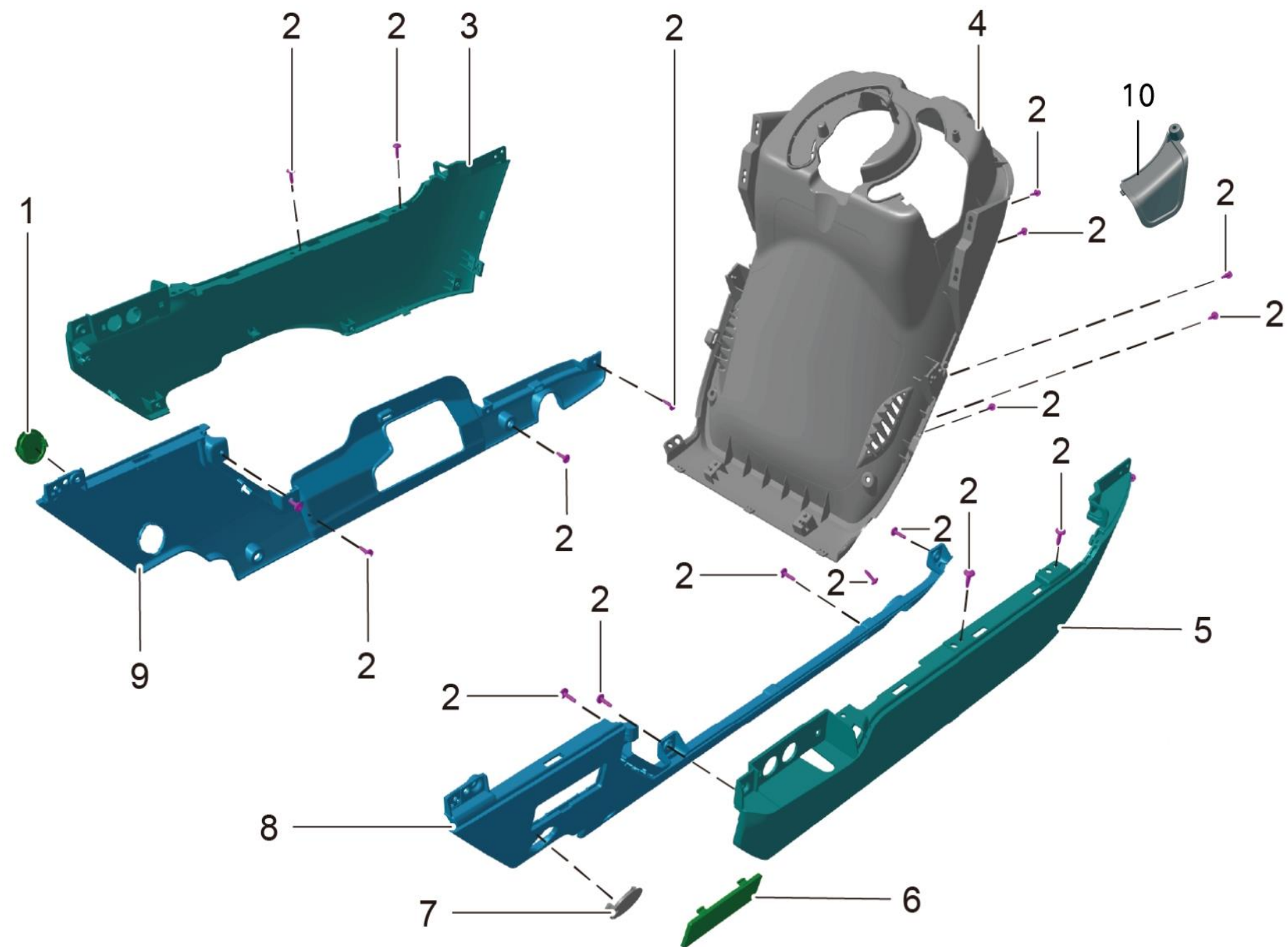
| POSITION NO. | CODE | CN DESCRIPTION | EN DESCRIPTION | QTY/ UNIT | REMARKS |
|--------------|--------------------|-------------------------------|---------------------------------------|-----------|---------|
| F71-04-1 | 64109-D0E8-0000501 | 前围 /E8/ABS/新亮黑/前 | Front Wall-Black/New gloss Black | 1 | |
| F71-04-1 | 64109-D0E8-0010402 | 前围/E8/ABS/消光海星蓝/前-蓝 | Front Wall/Starfish Blue | 1 | |
| F71-04-1 | 64109-D0E8-0010602 | 前围/E8/ABS/星际灰/前-新亮黑 | Front Wall/Interstellar Gray | 1 | |
| F71-04-2 | 33130-DE8S-0100 | 前LOGO灯 | Front LOGO Light | 1 | |
| F71-04-3 | 92055-0000041 | 十字槽盘头自攻螺钉-C型/ST4.2×13 | Cross Pan Tapping Screw/ST4.2×13 | 7 | |
| F71-04-4 | 33100-DE8S-0200 | 前照灯 | Headlight | 1 | |
| F71-04-5 | 92055-0000042 | 十字槽盘头自攻螺钉-C型/ST4.8×13 | Cross Pan Tapping Screw/ST4.8×13 | 5 | |
| F71-04-6 | 60101-D0E8-0100524 | 前泥板/冠智E8 3.0 CE-C/ABS/消光黑 | Front Fender/Satin Black | 1 | |
| F71-04-6 | 60101-D0E8-0100503 | 前泥板/E8/新亮黑 | Front Fender/New gloss Black | 1 | |
| F71-04-6 | 60101-D0E8-0100412 | 前泥板/冠智E8 3.0 CE-C/ABS/消光海星蓝-蓝 | Front Fender/Starfish Blue | 1 | |
| F71-04-6 | 60101-D0E8-0100612 | 前泥板/冠智E8 3.0 CE-C/ABS/星际灰-新亮黑 | Front Fende/Interstellar Gray | 1 | |
| F71-04-7 | 83107-DE8S-0100 | 前围装饰件 | Front Wall Trim | 1 | |
| F71-04-8 | 95023-0000004 | 六角头螺栓和平垫圈组合件 | Hexagon Bolt and Flat Washer Assembly | 4 | |



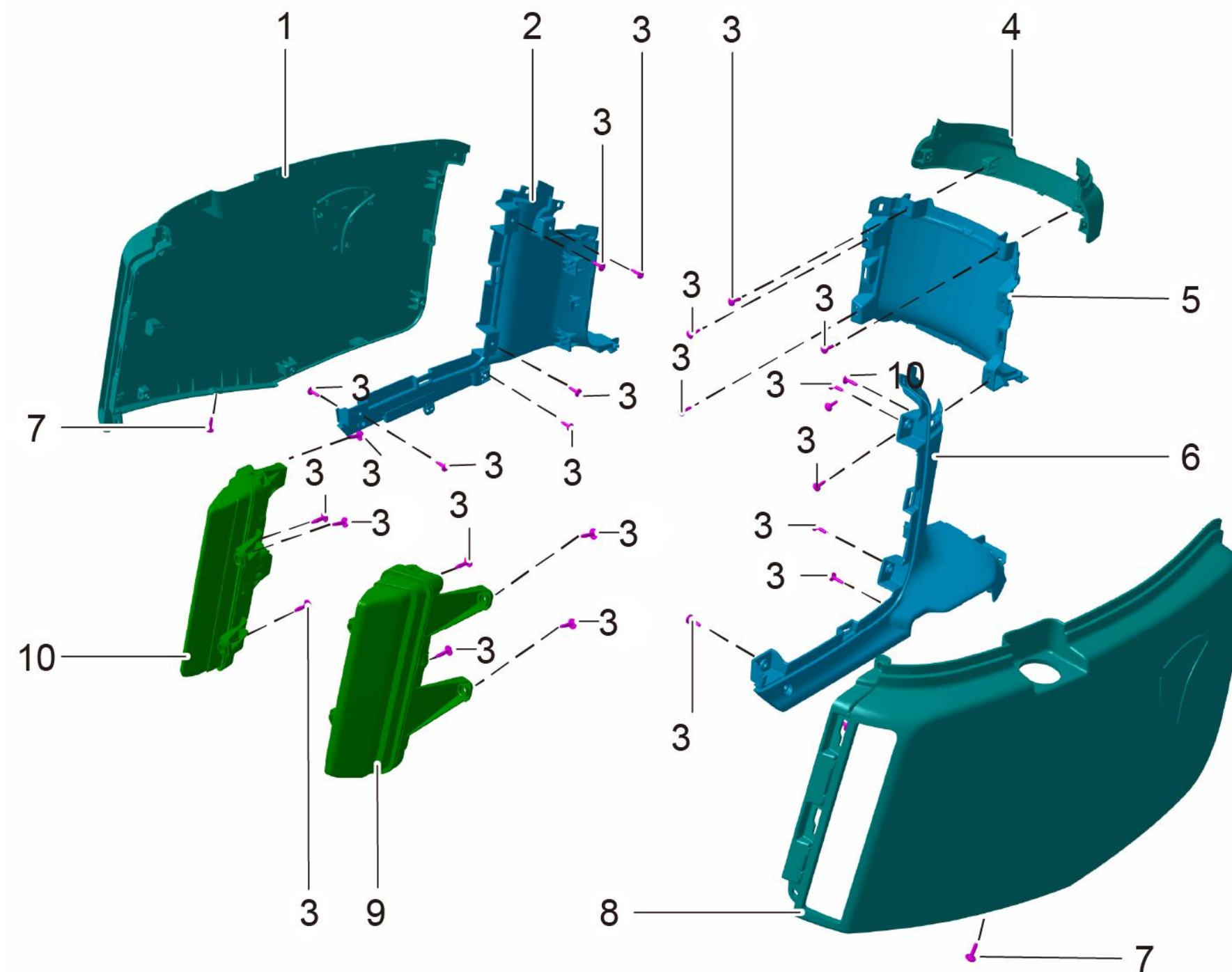
| POSITION NO. | CODE | CN DESCRIPTION | EN DESCRIPTION | QTY/ UNIT | REMARKS |
|--------------|-----------------|-----------------------|----------------------------------|-----------|---------|
| F71-05-1 | 92055-000052 | 十字槽盘头自攻螺钉-C型/ST4.2×13 | Cross Pan Tapping Screw/ST4.2×13 | 8 | |
| F71-05-2 | 64104-DE8S-0100 | 挡风板 | Front Windshield | 1 | |
| F71-05-3 | 64602-DE8S-0100 | 充电口安装板 | Charging Socket Mounting Plate | 1 | |
| F71-05-4 | 64128-DE8S-0100 | 内挡风连接件 | Inner Windshield Connector | 1 | |
| F71-05-5 | 92055-000041 | 十字槽盘头自攻螺钉-C型/ST4.2×13 | Cross Pan Tapping Screw/ST4.2×13 | 13 | |
| F71-05-6 | 64602-DE8S-0200 | 充电口盖板 | Charging Hole Cover | 1 | |
| F71-05-7 | 64131-DE8S-0100 | 工具箱 | Tool Box | 1 | |
| F71-05-8 | 64137-DE8S-0100 | 号码盖 | VIN Cover | 1 | |
| F71-05-9 | 64138-DM6S-0000 | 衣帽挂钩 | Hook | 1 | |



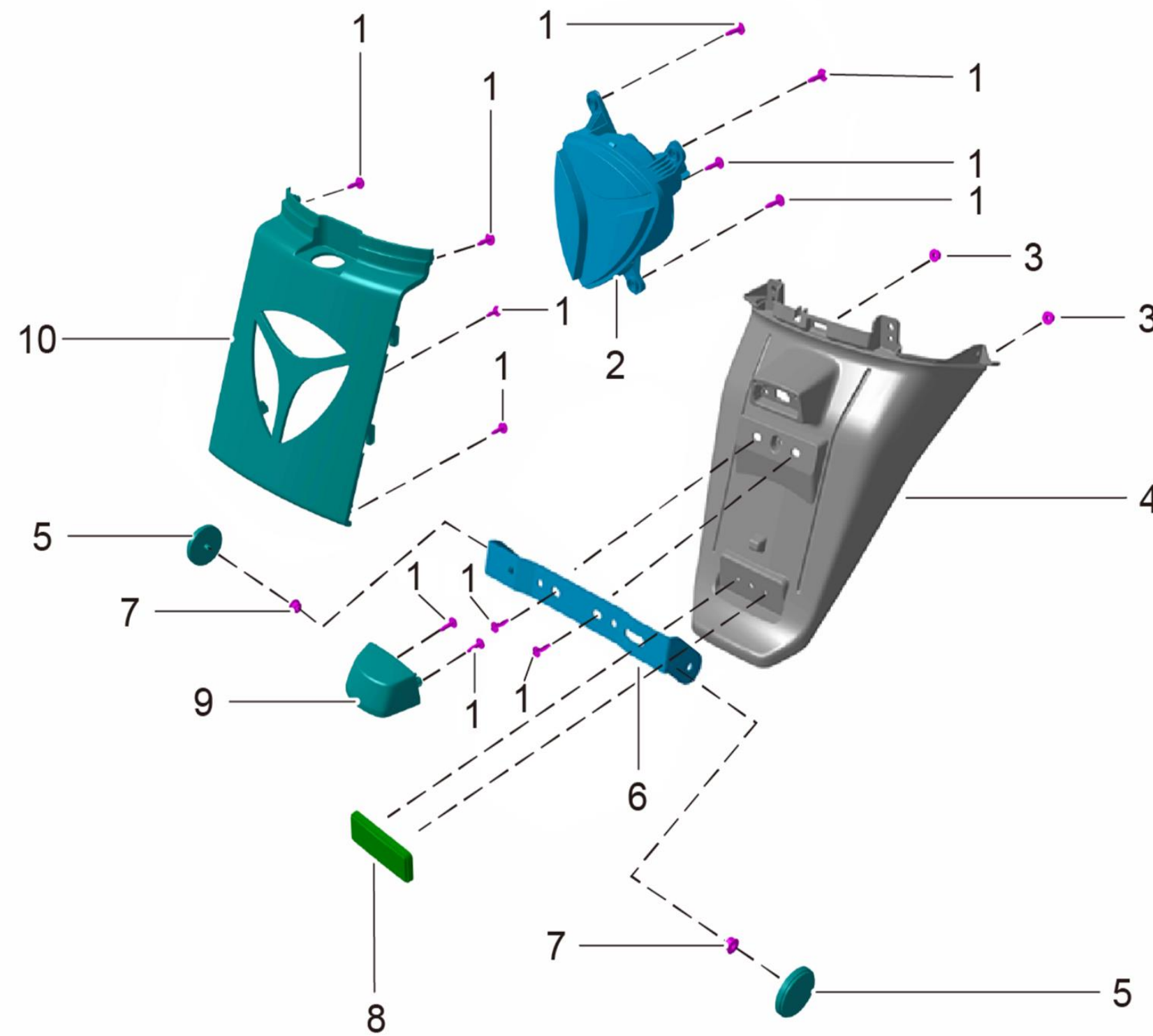
| POSITION NO. | CODE | CN DESCRIPTION | EN DESCRIPTION | QTY/ UNIT | REMARKS |
|--------------|-----------------|--|--|-----------|---------|
| F71-06-1 | 50254-DE8S-0400 | 电池盒组件/E8S/270X463/Q195/上盖/电泳+喷粉 | Battery Box Assembly/Cover | 1 | |
| F71-06-2 | 31120-D0E9-0100 | BMS电池管理系统/铅酸/72V/38AH/485/凌博/国外 | BMS | 1 | |
| F71-06-3 | 64306-DE8S-0100 | 脚踏板翻盖开关1 | Footplate Cover Switch | 1 | |
| F71-06-4 | 32340-DE8S-0200 | 电池连接线/6.0x100/DJ431-5C/橙色/单层线加厚/无保险/注塑带帽 | Battery Connection Cable | 3 | |
| F71-06-5-1 | 64305-DE8S-0100 | 脚踏板堵头 (后左) | Footplate Plug (Rear Left) | 1 | |
| F71-06-5-2 | 64305-DE8S-0300 | 脚踏板堵头 (前左) | Footplate Plug (Front Left) | 1 | |
| F71-06-5-3 | 64305-DE8S-0400 | 脚踏板堵头 (前右) | Footplate Plug (Front Right) | 1 | |
| F71-06-5-4 | 64305-DE8S-0200 | 脚踏板堵头 (后右) | Footplate Plug (Rear Right) | 1 | |
| F71-06-6 | 64304-DE8S-0100 | 脚踏板翻盖1 | Footplate Cover | 1 | |
| F71-06-7 | 64303-DE8S-0100 | 脚踏板1 | Footplate | 1 | |
| F71-06-8 | 92015-0000063 | 六角法兰面螺栓 加大系列 B级/M6×16 | Hexagon Flange Bolts/Heavy Series/Product GradeB | 4 | |
| F71-06-9 | 32340-N325-0100 | 电池连接线/6.0x200/DJ431-5C/一体式圆管保险6-0A/注塑带帽 | Battery Connection Cable | 1 | |
| F71-06-10 | 64347-DE8S-0100 | 踏板框 | Footplate Frame | 1 | |
| F71-06-11 | 16100-DE8S-0100 | 石墨烯电池 | Graphene Battery | 1 | |
| F71-06-12 | 50259-DE8S-0100 | 电池盒前销轴 | Front Axle of Battery Box | 1 | |
| F71-06-13 | 50259-DE8S-0200 | 电池盒后销轴 | Rear Axle of Battery Box | 1 | |
| F71-06-14 | 50254-DE8S-0200 | 电池盒总成 | Battery Box Assembly | 1 | |
| F71-06-15 | 90403-0000015 | 内衬缓冲垫 | Inner Sushion | 12 | |
| F71-06-16 | 50254-DE8S-0700 | 电池盒组件/E8S/14X234/SPHC/前后衬条/电泳+喷粉 | Battery Box Assembly/Side Bar(Front and Rear) | 2 | |
| F71-06-17 | 50254-DE8S-0600 | 电池盒组件/E8S/14X462/SPHC/左右衬条/电泳+喷粉 | Battery Box Assembly/(Left amd Right) | 2 | |
| F71-06-18 | 64358-DE8S-0100 | 电池盒内衬/E8S/ABS/黑色 | Battery Compartment Lining | 1 | |
| F71-06-19 | 32220-DE8S-0100 | 电池放电插座 | Battery Discharge Socket | 1 | |
| F71-06-20 | 32340-DE8S-0100 | 电池连接线/6.0x200/DJ431-5C/橙色/单层线加厚/无保险/注塑带帽 | Battery Connection Cable | 1 | |
| F71-06-21 | 64328-DE8S-0100 | 电池盒滑道/E8S/PP/270X149/后部 | Battery box slide/rear | 1 | |
| F71-06-22 | 64328-DE8S-0200 | 电池盒滑道/E8S/PP/240X101/前部 | Battery box slide/front | 1 | |
| F71-06-23 | 64346-DE8S-0200 | 脚踏护板连接件/E8S/PP/黑色/右 | Footplate connector/right | 1 | |
| F71-06-24 | 64346-DE8S-0300 | 脚踏护板连接件/E8S/PP/黑色/左 | Footplate connector/left | 1 | |



| POSITION NO. | CODE | CN DESCRIPTION | EN DESCRIPTION | QTY/ UNIT | REMARKS |
|--------------|--------------------|-----------------------|----------------------------------|-----------|---------|
| F71-07-1 | 52128-DE8S-0200 | 平叉轴堵盖 | Fork Axle Left Cap | 1 | |
| F71-07-2 | 92055-0000042 | 十字槽盘头自攻螺钉-C型/ST4.8×13 | Cross Pan Tapping Screw/ST4.8×13 | 17 | |
| F71-07-3 | 64308-DOE8-0300501 | 左边条/ABS/新亮黑/左 | Left Side Cover/New Gloss Black | 1 | |
| F71-07-3 | 64308-DOE8-0300402 | 左边条/ABS/消光海星蓝/左-蓝 | Left Side Cover/Starfish Blue | 1 | |
| F71-07-4 | 60108-DE8S-0100 | 前内泥板/PP/黑/出口专用 | Front Inner Fender | 1 | |
| F71-07-5 | 64309-DOE8-0000501 | 右边条/ABS/新亮黑/上 | Right Side Cover/New Gloss Black | 1 | |
| F71-07-5 | 64309-DOE8-0000403 | 右边条/ABS/消光海星蓝/上-蓝 | Right Side Cover/Starfish Blue | 1 | |
| F71-07-6 | 64137-DE8S-0100 | 铭牌盖/PP/黑 | VIN Plate Cover | 1 | |
| F71-07-7 | 52128-DE8S-0100 | 平叉轴堵盖 | Fork Axle Right Cap | 1 | |
| F71-07-8 | 64309-DE8S-0100 | 右下边条 | Lower Right Side Cover | 1 | |
| F71-07-9 | 64308-DE8S-0100 | 左下边条 | Lower Left Side Cover | 1 | |
| F71-07-10 | 60111-DE8S-0100 | 前内挡泥板盖/PP/黑 | Front inner fender cover | 1 | |

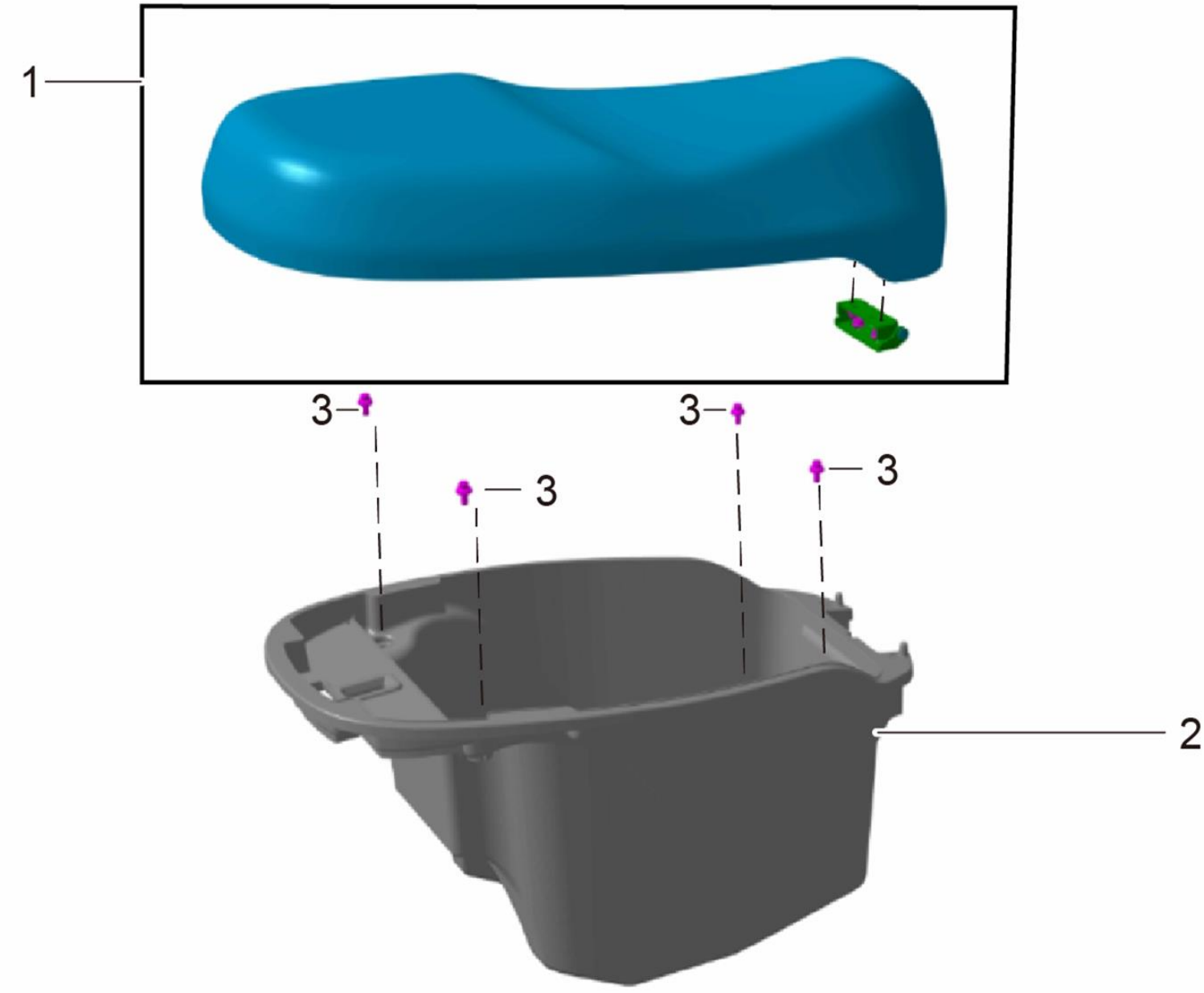


| POSITION NO. | CODE | CN DESCRIPTION | EN DESCRIPTION | QTY/ UNIT | REMARKS |
|--------------|--------------------|-----------------------------|---|-----------|---------|
| F71-08-1 | 64314-D0E8-0100409 | 车体左护板/ABS/消光海星蓝/无LOGO | Left Side Cover/Starfish Blue/Without LOGO | 1 | |
| F71-08-1 | 64314-D0E8-0100625 | 车体左护板/ABS/星际灰/无LOGO | Left Side Cover/Interstellar Gray/Without LOGO | 1 | |
| F71-08-1 | 64314-D0E8-0100520 | 车体左护板/ABS/新亮黑/无LOGO | Left Side Cover/New Gloss Black/Without LOGO | 1 | |
| F71-08-2 | 64337-DE8S-0100 | 中心罩左连接板 | Center cover left connector | 1 | |
| F71-08-3 | 92055-0000052 | 十字槽盘头自攻螺钉-C型/ST4.2×13 | Cross Pan Tapping Screw Grade C/ST4.2×13 | 24 | |
| F71-08-4 | 83418-N0E9-0100604 | 中心罩装饰件/ABS/月光银/上鼓刹/一号手柄-新亮黑 | Center Cover-Silver | 1 | |
| F71-08-5 | 64333-DE8S-0100 | 中心罩/PP/黑/出口专用 | Center Cover | 1 | |
| F71-08-6 | 64338-DE8S-0100 | 中心罩右连接板 | Center cover right connector | 1 | |
| F71-08-7 | 92055-0000042 | 十字槽盘头自攻螺钉-C型/ST4.8×13 | Cross Pan Tapping Screw Grade C/ST4.8×13 | 2 | |
| F71-08-8 | 64315-D0E8-0100624 | 车体右护板/ABS/星际灰/无LOGO | Right Side Cover/Interstellar Gray/Without LOGO | 1 | |
| F71-08-8 | 64315-D0E8-0100521 | 车体右护板/ABS/新亮黑/无LOGO | Right Side Cover/New Gloss Black/Without LOGO | 1 | |
| F71-08-8 | 64315-D0E8-0100418 | 车体右护板/ABS/消光海星蓝/无LOGO | Right Side Cover/Starfish Blue/Without LOGO | 1 | |
| F71-08-9 | 33340-N0E9-0100 | 后右转向灯 | Right Rear Turn Signal Relay | 1 | |
| F71-08-10 | 33330-N0E8-0000 | 后左转向灯 | Left Rear Turn Signal Relay | 1 | |

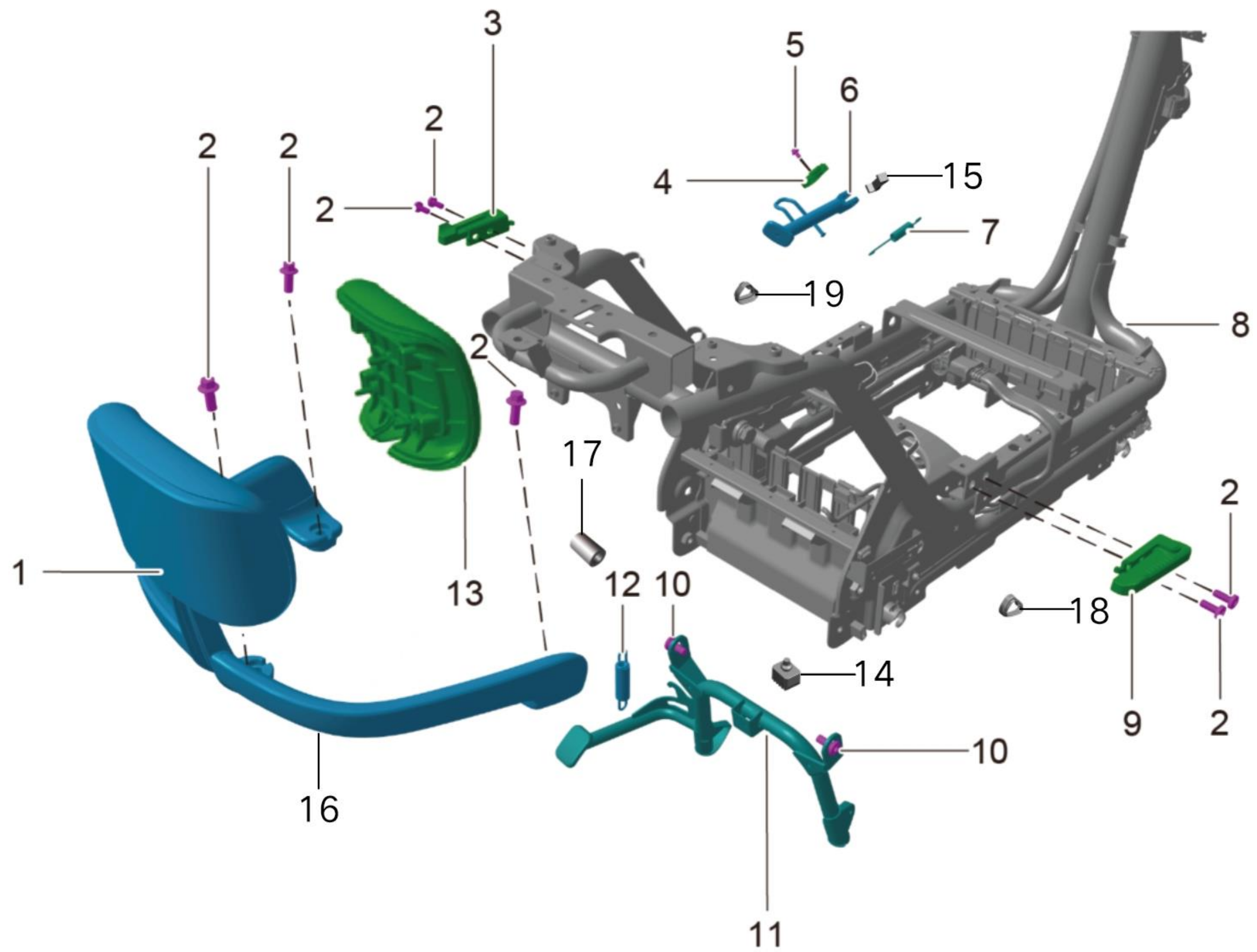


| POSITION NO. | CODE | CN DESCRIPTION | EN DESCRIPTION | QTY/ UNIT | REMARKS |
|--------------|--------------------|-----------------------|--|-----------|---------|
| F71-09-1 | 92055-0000042 | 十字槽盘头自攻螺钉-C型/ST4.8×13 | Cross Pan Tapping Screw Grade C/ST4.8×13 | 10 | |
| F71-09-2 | 33200-DE8S-0100 | 后尾灯 | Taillight | 1 | |
| F71-09-3 | 92015-0000081 | 六角法兰面螺栓 加大系列 B级/M6×12 | Hexagon Flange Nut Grade C/M6×12 | 2 | |
| F71-09-4 | 69109-DE8S-0100 | 后轮挡泥板/PP/黑 | Rear Fender | 1 | |
| F71-09-5 | 33630-N0E3-0000 | 侧回复反射器 | Side Reflector (Right) | 2 | |
| F71-09-6 | 64622-NM6S-0000 | 侧反射器支架 | Side Reflector Bracket | 1 | |
| F71-09-7 | 94003-0000025 | 2型六角法兰面螺母/M6 | Hexagon Flange Nut | 2 | |
| F71-09-8 | 33620-D0T3-0000 | 后回复反射器 | Rear Reflector | 1 | |
| F71-09-9 | 33240-D0T2-0100 | 后牌照牌灯 | Rear License Plate Light | 1 | |
| F71-09-10 | 64316-D0E8-0000507 | 车体护板连接板/ABS/新亮黑/后 | Guard Plate Connector/New Gloss Black | 1 | |
| F71-09-10 | 64316-D0E8-0000409 | 车体护板连接板/ABS/消光海星蓝/后-蓝 | Guard Plate Connector/Starfish Blue | 1 | |
| F71-09-10 | 64316-D0E8-0000601 | 车体护板连接板/ABS/星际灰/后-新亮黑 | Guard Plate Connector/Interstellar Gray | 1 | |

F71-10 座桶 Seat box

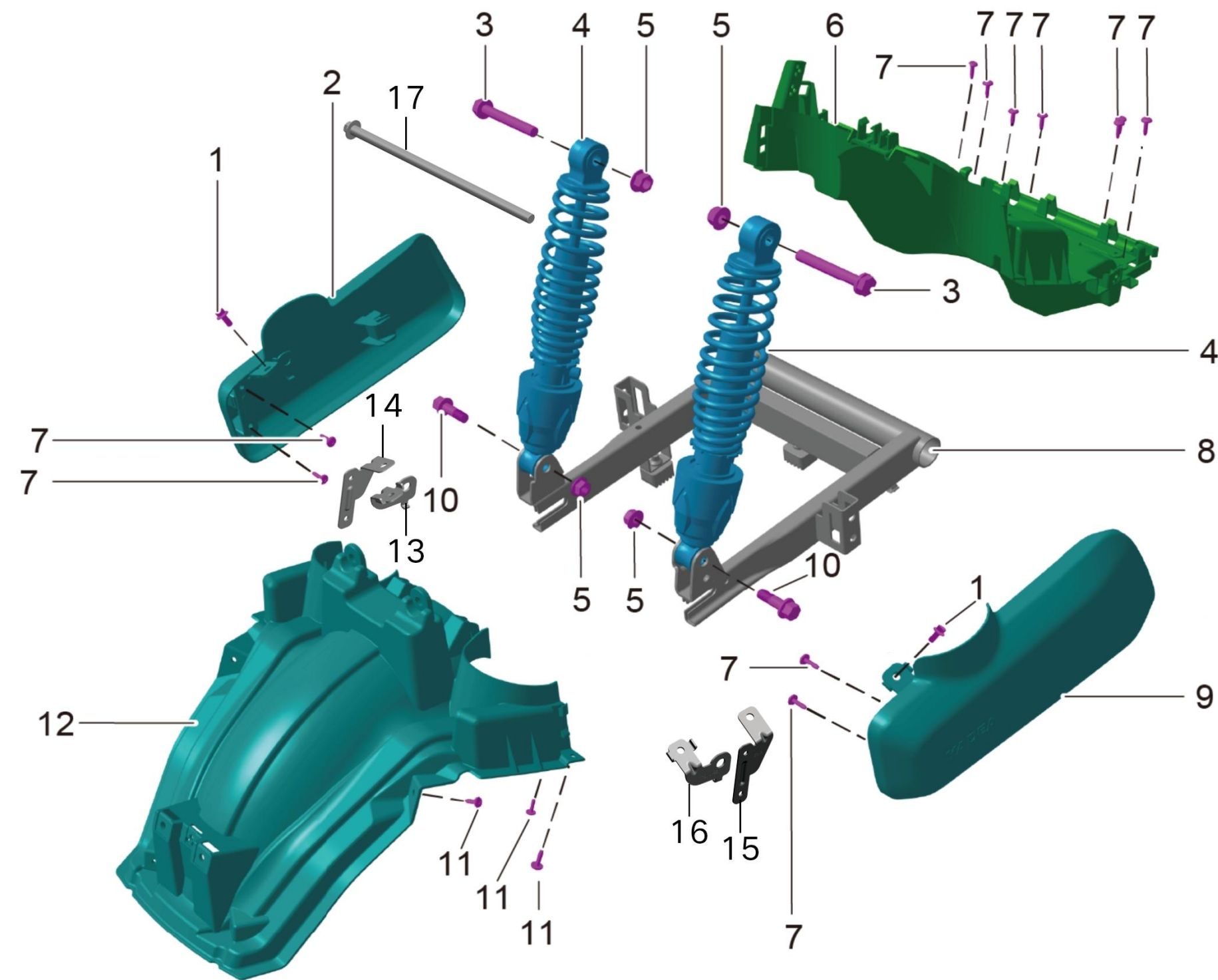


| POSITION NO. | CODE | CN DESCRIPTION | EN DESCRIPTION | QTY/ UNIT | REMARKS |
|--------------|-----------------|-----------------------|--|-----------|---------|
| F71-10-1 | 77100-DE8S-0100 | 座垫 | Seat Cushion | 1 | |
| F71-10-2 | 64604-DE8S-0100 | 座桶/PP/黑 | Seat Bucket | 1 | |
| F71-10-3 | 92015-0000063 | 六角法兰面螺栓 加大系列 B级/M6×16 | Hexagon Flange Bolt-Heavy Series/M6×16 | 4 | |



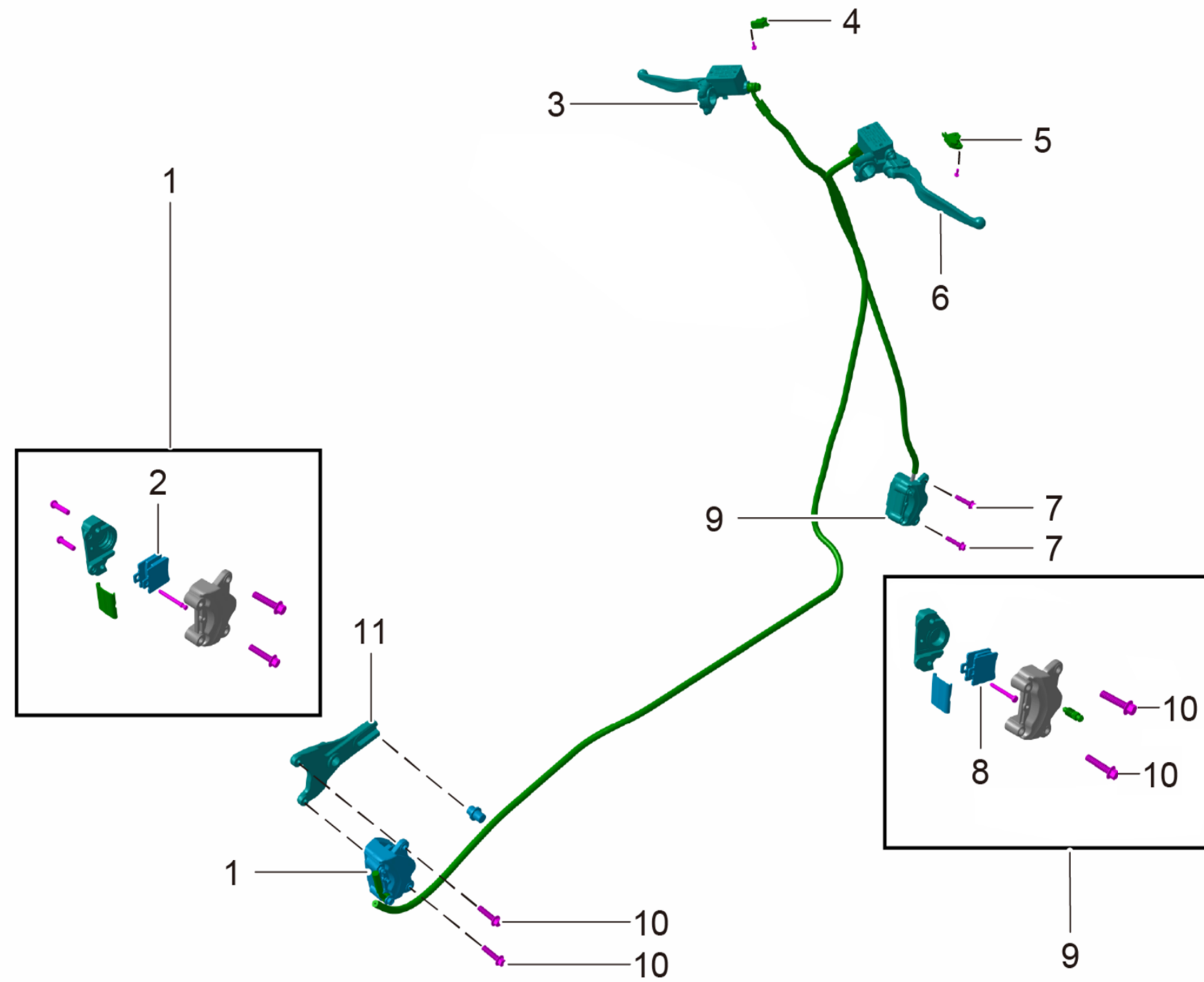
| POSITION NO. | CODE | CN DESCRIPTION | EN DESCRIPTION | QTY/ UNIT | REMARKS |
|--------------|--------------------|-------------------------------------|---------------------------------|-----------|---------|
| F71-11-1 | 83621-NM6S-0100511 | 靠背装饰件/M6/ABS/新亮黑/无 | Backrest Trim/New Gloss Black | 1 | |
| F71-11-1 | 83621-NM6S-0100421 | 靠背装饰件/M6/ABS/消光海星蓝/无-蓝 | Backrest Trim/Starfish Blue | 1 | |
| F71-11-1 | 83621-NM6S-0100615 | 靠背装饰件/M6/ABS/星际灰/无-新亮黑 | Backrest Trim/Interstellar Gray | 1 | |
| F71-11-2 | 92029-0000010 | 内六角花形盘头螺钉/M8×25 | Hexagon Flange Bolt/M8×25 | 7 | |
| F71-11-3 | 50712-D0E8-0000 | 左搁脚 | Left Footrest | 1 | |
| F71-11-4 | 35710-DECO-0000 | 单撑断电开关 | Power Off Switch | 1 | |
| F71-11-5 | 90001-0000007 | 侧支架螺栓 | Side Stand Bolt | 1 | |
| F71-11-6 | 50530-N0T5-0100 | 侧支架 | Side Stand | 1 | |
| F71-11-7 | 90351-0000045 | 弹簧 | Spring | 1 | |
| F71-11-8 | 50100-DE8S-0100 | 车架 | Frame | 1 | |
| F71-11-9 | 50722-D0E8-0000 | 右搁脚 | Right Footrest | 1 | |
| F71-11-10 | 90002-0000009 | 主支架螺栓 | Main Stand Bolt | 2 | |
| F71-11-11 | 50500-G027-0200 | 主支架 | Main stand | 1 | |
| F71-11-12 | 90352-0000016 | 弹簧 | Main Stand Spring | 1 | |
| F71-11-13 | 68540-D0T2-0000 | 靠背/PP/黑 | Backrest | 1 | |
| F71-11-14 | 50513-NM6S-0000 | 主支架缓冲胶/长32×宽24×高18/黑 | Main stand buffer | 1 | |
| F71-11-15 | 50537-20M8-0000 | 侧支架缓冲胶/10×34×14/黑 | Side stand buffer | 1 | |
| F71-11-16 | 68100-D0E8-0200 | 后货架/铝合金/银/φ25×t1.0/电泳/带左右装饰件及烤漆后装饰件 | Rear rack | 1 | |
| F71-11-17 | 90560-0000005 | 主支架衬套/外φ15 ×内φ10×长10/三价黑锌/带法兰 | Main stand bushing | 1 | |
| F71-11-18 | 64368-DE8S-0100 | 卡线护板/PP/黑色/右 | Cable guard board/right | 1 | |
| F71-11-19 | 64368-DE8S-0300 | 卡线护板/PP/黑色/左 | Cable guard board/left | 1 | |

F71-12 后平叉 REAR FORK

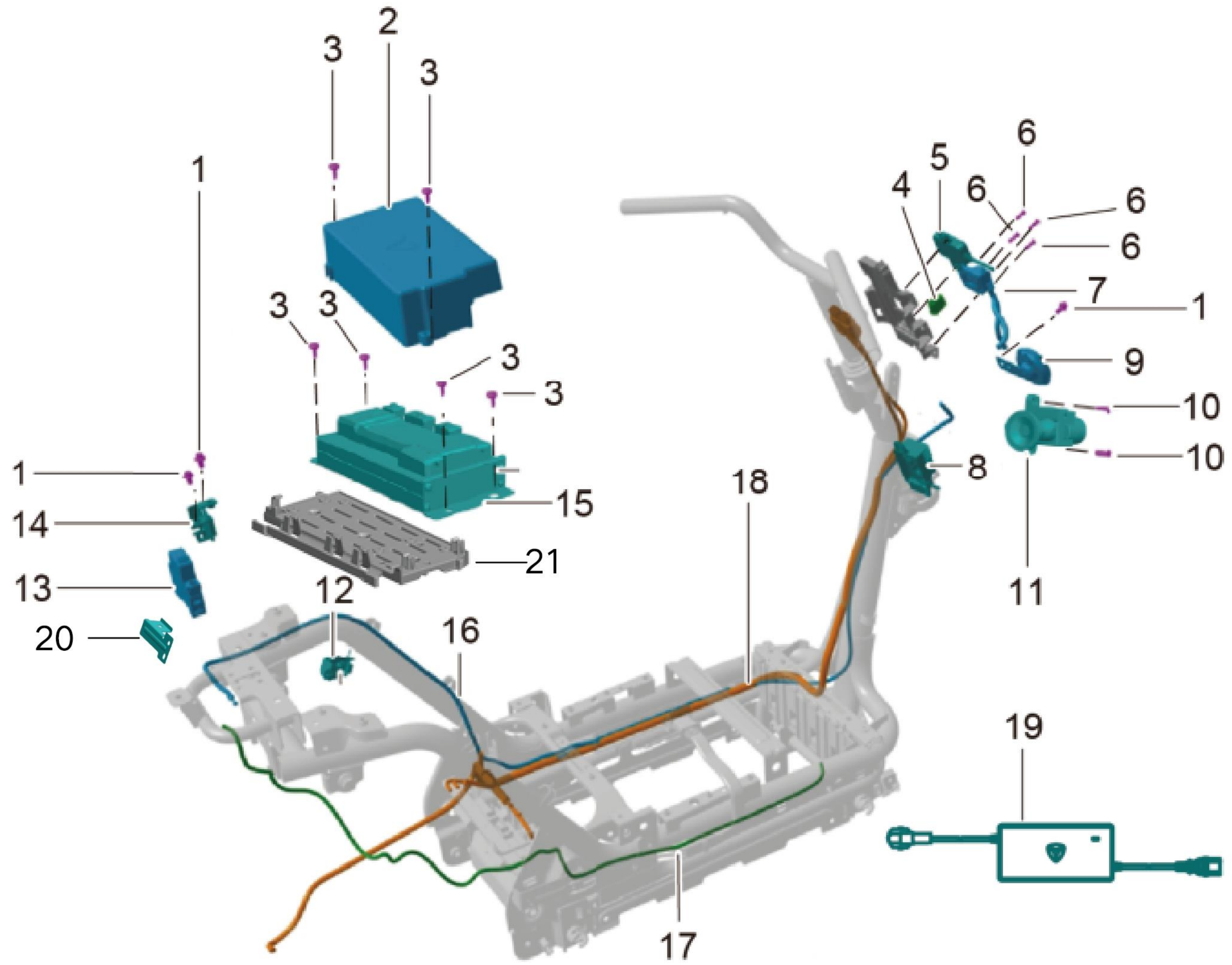


| POSITION NO. | CODE | CN DESCRIPTION | EN DESCRIPTION | QTY/ UNIT | REMARKS |
|--------------|--------------------|--|--|-----------|---------|
| F71-12-1 | 92015-0000058 | 六角法兰面螺栓 加大系列 B级/M6×12 | Hexagon Flange Bolt-Heavy Series B/M6×12 | 1 | |
| F71-12-2 | 64342-D0E8-0000604 | 平叉左护板/矿石深灰 | Left Fork Cover-Gray | 1 | |
| F71-12-3 | 92015-0000186 | 六角法兰面螺栓 加大系列 B级/M10×1.25×70 | Hexagon Flange Bolt GradeB/M10×1.25×70 | 2 | |
| F71-12-4 | 52300-2362-0300 | 后减震器/液压/320/上下φ10/φ32/电镀银/全簧/φ48.5/φ6.5/不可调/60-1435 | Rear Shock Absorber | 2 | |
| F71-12-4 | 52300-DE8S-0100 | 后减震器/液压/320/φ10/φ32/电镀/黑色/48.5/φ6.5/60-1435/可调/CASS32h | Rear Shock Absorber | 2 | |
| F71-12-5 | 94005-0000017 | 2型全金属六角法兰面锁紧螺母/M10×1.25 | Hexagon Flange Lock Nut | 2 | |
| F71-12-6 | 69108-DE8S-0100 | 挡水板 | Rear Baffle | 1 | |
| F71-12-7 | 92055-0000042 | 十字槽盘头自攻螺钉-C型/ST4.8×13 | Cross Pan Tapping Screw-Grade /CST4.8×13 | 10 | |
| F71-12-8 | 52100-D0E8-1000 | 后平叉 | Rear Fork | 1 | |
| F71-12-9 | 64343-D0E8-0100604 | 平叉右护板/矿石深灰 | Right Fork Cover-Gray | 1 | |
| F71-12-10 | 92015-0000185 | 六角法兰面螺栓 加大系列 B级/M10×1.25×45 | Hexagon Flange Bolt | 2 | |
| F71-12-11 | 92055-0000055 | 十字槽盘头自攻螺钉-C型/ST4.8×16 | Cross Pan Tapping Screw-Grade C/ST4.8×16 | 2 | |
| F71-12-12 | 69103-N0E9-0100 | 后挡泥板内衬 | Rear Inner Fender | 1 | |
| F71-12-13 | 52114-D0E8-0000 | 平叉左护板安装板/前支架组件电泳+喷粉黑 | bracket | 1 | |
| F71-12-14 | 52114-D0E8-0200 | 平叉左护板安装板/后支架/电泳+喷粉黑 | bracket | 1 | |
| F71-12-15 | 52115-D0E8-0100 | 平叉右护板安装板/后电泳+喷粉(黑色) | bracket | 1 | |
| F71-12-16 | 52115-D0E8-0300 | 平叉右护板安装板/前电泳+喷粉(黑色) 12寸 | bracket | 1 | |
| F71-12-17 | 90203-0000019 | 后平叉轴/M12×1.25×280/8.8 | Rear fork axle | 1 | |

F71-13 制动



| POSITION NO. | CODE | CN DESCRIPTION | EN DESCRIPTION | QTY/ UNIT | REMARKS |
|--------------|-----------------|----------------|------------------------------|-----------|---------|
| F71-13-1 | 43300-DE8S-0100 | 后制动器碟刹泵 | Rear Disc Brake Pump | 1 | |
| F71-13-2 | 43302-D0E8-0400 | 碟刹制动片 | Disc Brake Pads (Rear) | 1 | |
| F71-13-3 | 53220-D0E8-0200 | 后制动手柄 | Rear Brake Lever | 1 | |
| F71-13-4 | 35710-D0E8-0400 | 断电开关 | Brake Switch (Left) | 1 | |
| F71-13-5 | 35710-D0E8-0300 | 断电开关 | Brake Switch (Right) | 1 | |
| F71-13-6 | 53210-D0E8-0300 | 前制动手柄 | Front Brake Lever | 1 | |
| F71-13-7 | 92015-0000056 | 六角法兰面螺栓/M8×35 | Hexagon Flange Bolt/M8×35 | 2 | |
| F71-13-8 | 43302-D0E8-0300 | 碟刹制动片 | Disc Brake Pads (Front) | 1 | |
| F71-13-9 | 45300-DE8S-0100 | 前制动器碟刹泵 | Front Disc Brake Pump | 1 | |
| F71-13-10 | 92015-0000144 | 六角法兰面螺栓/M8×25 | Hexagon Flange Bolt/M8×25 | 4 | |
| F71-13-11 | 43351-DE8S-0100 | 后制动器支架 | Rear Disc Brake Pump Bracket | 1 | |



| POSITION NO. | CODE | CN DESCRIPTION | EN DESCRIPTION | QTY/ UNIT | REMARKS |
|--------------|-----------------|---|--|-----------|---------|
| F71-14-1 | 92015-0000184 | 六角法兰面螺栓/M6×12 | Hexagon Flange Bolt | 2 | |
| F71-14-2 | 64623-DE8S-0100 | 控制器盖/PP/黑 | Controller Cover | 1 | |
| F71-14-3 | 92055-0000041 | 十字槽盘头自攻螺钉-C型/ST4.2×13 | Cross Pan Tapping Screw Grade C/ST4.2×13 | 1 | |
| F71-14-4 | 37210-2S1A-0100 | 闪光器/12V/30W/85次/LED 长形 | Flasher/30W/85/LED Rectangle | 1 | |
| F71-14-5 | 31140-D0T5-0000 | USB | USB | 1 | |
| F71-14-6 | 92050-0000012 | 十字槽盘头螺钉/M4×16 | Cross Pan Tapping Screw/M4×16 | 4 | |
| F71-14-7 | 32230-N065-0100 | 充电口 | Charger Port | 1 | |
| F71-14-8 | 31130-2156-0000 | 转换器 | Converter | 1 | |
| F71-14-9 | 38250-N080-0000 | 喇叭 | Horn | 1 | |
| F71-14-10 | 92017-0000016 | 六角法兰面螺栓 小系列粗杆/M6×16 | Cross Pan Tapping Screw/M6×16 | 2 | |
| F71-14-11 | 35100-2M6S-0200 | 套锁 | Lock Set | 1 | |
| F71-14-12 | 39182-N168-0000 | 防盗器/蓝牙报警器/四键/双只/高保真/保镖18旋钮锁 | Alarm | 1 | |
| F71-14-12 | 39180-DE8S-0100 | 防盗器/黑曜石手柄/双只/遥控上电/-寻车 | Alarm | 1 | |
| F71-14-13 | 31110-2QMI-1400 | 空气开关 | Air Switch | 1 | |
| F71-14-14 | 53280-N214-0000 | 座垫锁板 | Seat Cushion Lock Plate | 1 | |
| F71-14-15 | 14100-20E8-0100 | 控制器 | Controller | 1 | |
| F71-14-16 | 53270-2384-0000 | 座垫拉索 | Seat Cushion Cable | 1 | |
| F71-14-17 | 32120-DE8S-0200 | 信号线 | Signal Wire | 1 | |
| F71-14-18 | 32110-DE8S-0100 | 动力线/换电 | Power Wire | 1 | |
| F71-14-19 | 18100-N0X5-0200 | 充电器/铅酸外/72V/6A/20-44Ah-/AC220/贴花/马来西亚 | Charger/Malaysia | 1 | |
| F71-14-19 | 18100-DE8S-1500 | 充电器/铅酸外/72V/6A/0-44Ah/AC220/英文/E150P海外版72V38Ah铅酸电池充电器 | Charger | 1 | |
| F71-14-20 | 50342-D0E8-0300 | 空气开关安装板/电泳+喷粉/黑 | Circuit breaker mounting board | 1 | |
| F71-14-21 | 64626-DE8S-0100 | 控制器安装板/PP/黑 | Controller mounting board | 1 | |